



Upgrade Procedure for
SOLH264ENC, SOLH264TX,
SOLH264ENGTX, SOLHASITX
D588 and D730

Table of Contents

Contents

D588 Programming	3
Upgrade	3
Menu Structure	4
Settings	5
D730 Programming	6
With Front Panel	6
Without Front Panel	6
Upgrade	7

DTC – Tampa (Head Office)

3845 Gateway Centre Boulevard
Suite 360
Pinellas Park, FL
33782, USA

T: +1 727 471 6900

DTC – Solent

Fusion 2, 1100 Parkway
Solent Business Park
Whiteley, Hampshire
PO15 7AB, UK

T: +44 (0) 1489 566 750

DTC – Randers

Haraldsvej 64B
DK-8960
Randers SØ
Denmark

T: +45 8791 8100

DTC – Singapore

21 Media Circle
Infinite Studios #06-04
Singapore
138562

T: +65 6643 4700

DTC – Brasil

Alameda Araguaia 2
190 – Ed. CEA II – suite 1109
Alphaville – Barueri – 06455-000
São Paulo – SP – Brasil

T: +55 11 2321 5055

D588 Programming

Relevant to:

- SOLHDTX
- SOLH264ENC
- SOLH264TX
- SOLASITX

This procedure provides the D588 board with the latest software, and correct license, menu files and settings for the SOLH264 unit.

Upgrade

Ensure the SOLH264 unit's power supply is switched off.

Connect the USB control cable (CA0343) to the PC.

Whilst holding down the right front panel button connect the USB control cable to the Ctrl input of the SOLH264 unit.

The front panel will show...
D588 bootloader UP = start

Release the button, then move the right front panel button upwards, and the front panel should show...

Erasing Flash followed by Start Download.

Start Tera Term Pro and open a new connection by selecting Setup -> Serial Port... with the settings shown below in Figure 1 on the appropriate COM port.

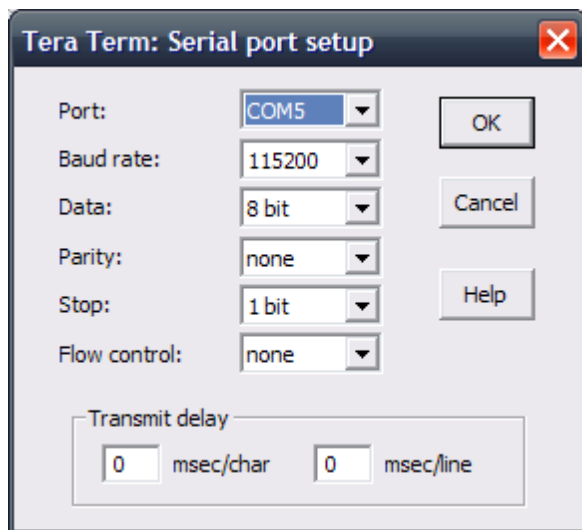


Figure 1: Tera Term D588 Serial Port Settings

Select File -> Send File... and ensure the Binary checkbox is not checked as shown below in Figure 2. Navigate to the full code file labelled D588_vX_X.all and click Open.

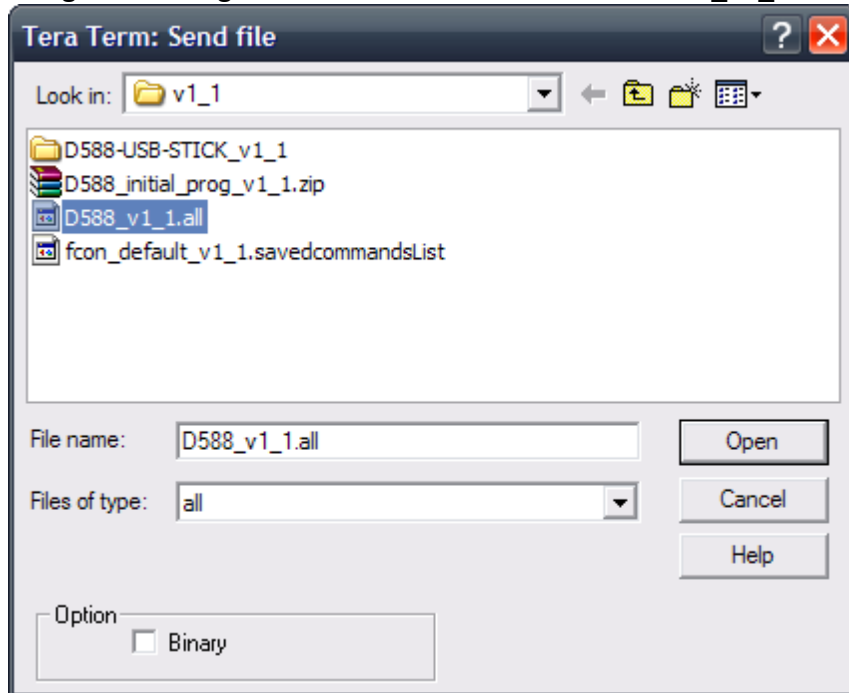


Figure 2: Tera Term D588 File Download

A progress box will appear as shown below in Figure 3. This will disappear once the file transfer is complete.

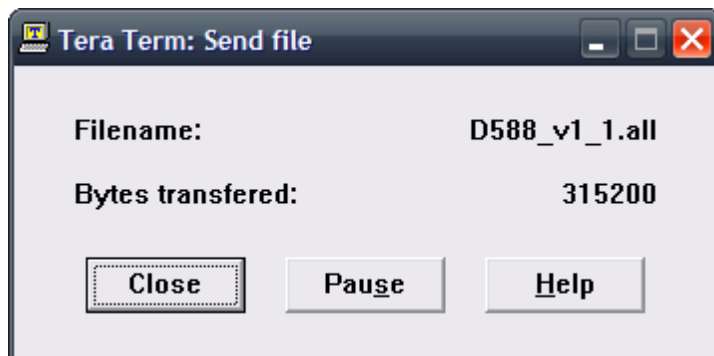


Figure 3: Tera Term D588 Progress Window

If the code has been accepted the D588 will reboot automatically. Close Tera Term and disconnect the USB control cable

Menu Structure

Navigate to the latest release of D588-USB-STICK_vX_X\MENUS\D588-full-menu_vX_X.zip and extract all the files in this folder.

Navigate to the location of the extracted files and run the update.bat file. A Command window will open and the connected Port will find the D588, the Menu's will be loaded and once this is complete the Command window will close.

Settings

Disconnect the USB control cable.

Switch on the SOLH264ENG unit's power supply.

Using the right front panel button navigate the menu structure to Local Settings -> SOLO4 FP and change this setting to On. If changing this setting is not accepted, then the D588 license may be incorrect.

Once SOLO4 FP On is displayed, press the left front panel button twice and the SOLO4 style front panel should now be displayed as shown below in Figure 4.



Figure 4: SOLH264TX with SOLO4 style front panel

Disconnect the USB control cable and switch off the SOLH264ENG unit's power supply.

D730 Programming

Relevant to:

- SOLHDTX
- SOLH264ENC
- SOLH264TX
- SOLASITX

This procedure provides the D730 board with the latest software for the SOLH264 unit.

With Front Panel

Ensure the SOLH264 unit's power supply is switched off.

Connect the USB control cable (CA0343) from the PC to the Ctrl input on the SOLH264 unit. Start Tera Term Pro and open a new connection by selecting Setup -> Serial Port... with the settings shown below in Figure 5 on the appropriate COM port.

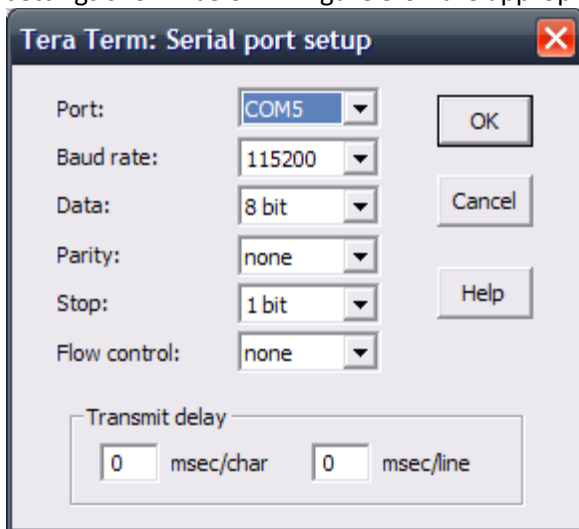


Figure 5: Tera Term D730 Serial Port Settings

Using the SOLH264 unit's front panel buttons navigate the menu structure to Local Settings -> Terminal Mode and change this setting to Yes.

Without Front Panel

Ensure the SOLH264 unit's power supply is switched off.

Connect the RS232 control cable (CA0001) from the PC to the Ctrl input on the SOLH264 unit.

Start Tera Term Pro and open a new connection by selecting Setup -> Serial Port... with the settings shown below in Figure 5 on the appropriate COM port.

Upgrade

Ensure you have Tera Term selected on the PC and switch on the power supply.

Almost immediately press the x key, this will start the S-Record loader, then type A (shift-a) to select Erase All.

If nothing is shown in Tera Term ensure the COM port being used is correct.

The board will respond with Erasing whole flash, followed by Download code now: in under a minute.

Select File -> Send File... and ensure the Binary checkbox is not checked as shown below in Figure 6.

If **Domo D730.1** is shown in Tera Term select the full code file labelled d730.1_vX.X.mcs and click **Open**.

If **Domo D730.2** is shown in Tera Term select the full code file labelled d730.2_vX.X.mcs and click **Open**.

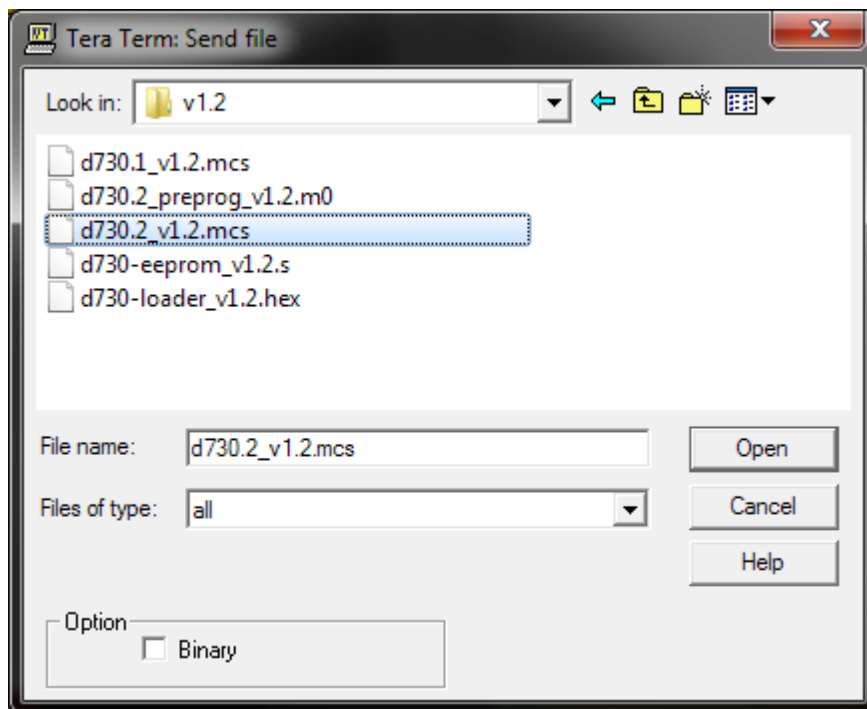


Figure 6: Tera Term D730 Code Download File Selection

A progress box will appear as shown below in Figure 7. This will disappear once the file transfer is complete.

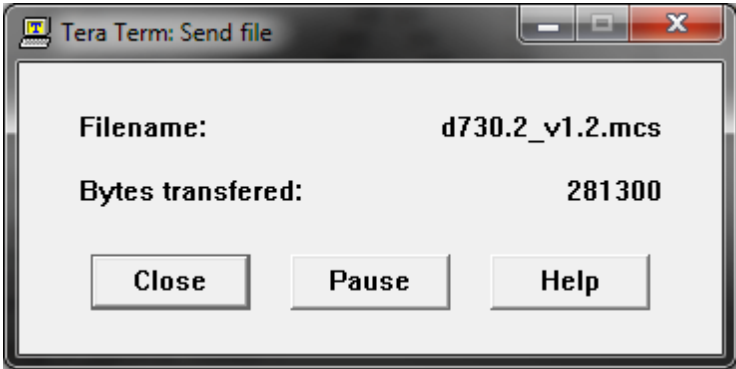


Figure 7: Tera Term D730 Code Download Progress Window

Once completed the board should respond with a series of messages; S-record received, Download ok, Verifying signature... OK, and Programming code. The board will then re-boot and Tera Term should look similar to that shown below in Figure 8.

